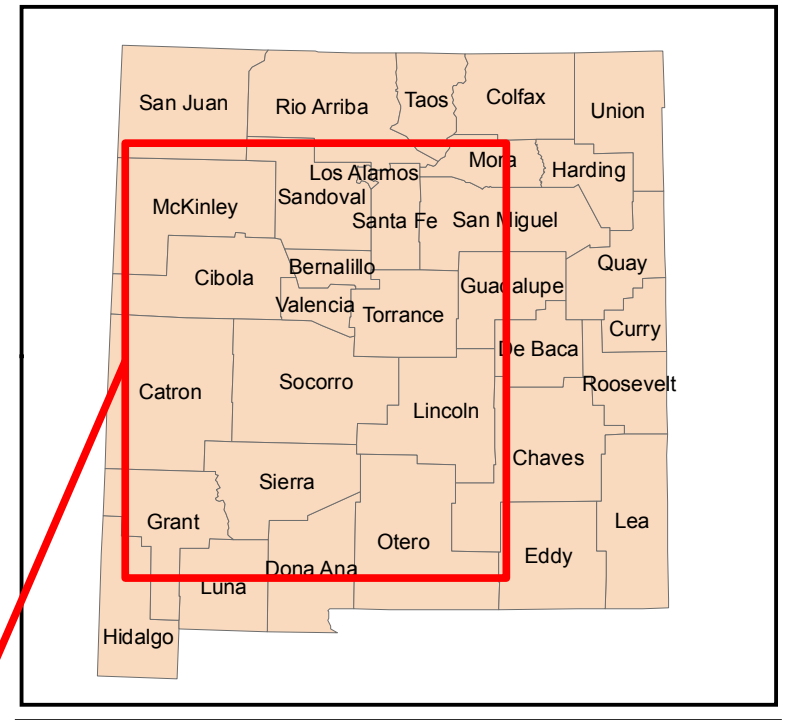


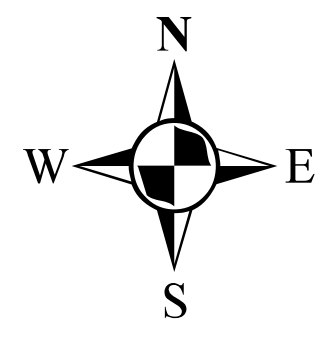
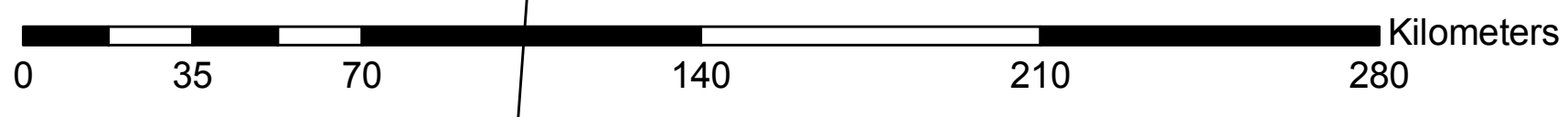
Rio Grande River Basin Treatment Coverage



- Cities 1000+
- Spray Coverage
- Rio Grande River
- NM Soil & Water Conservation Districts
- Interstates

New Mexico Land Cover

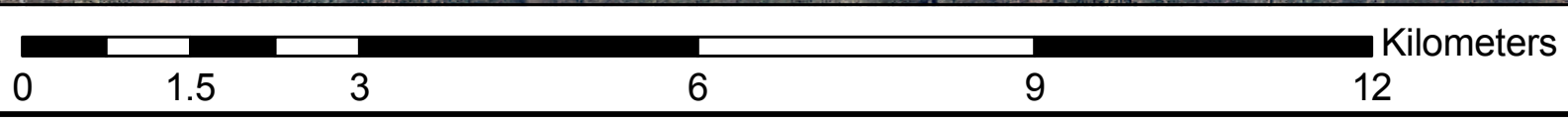
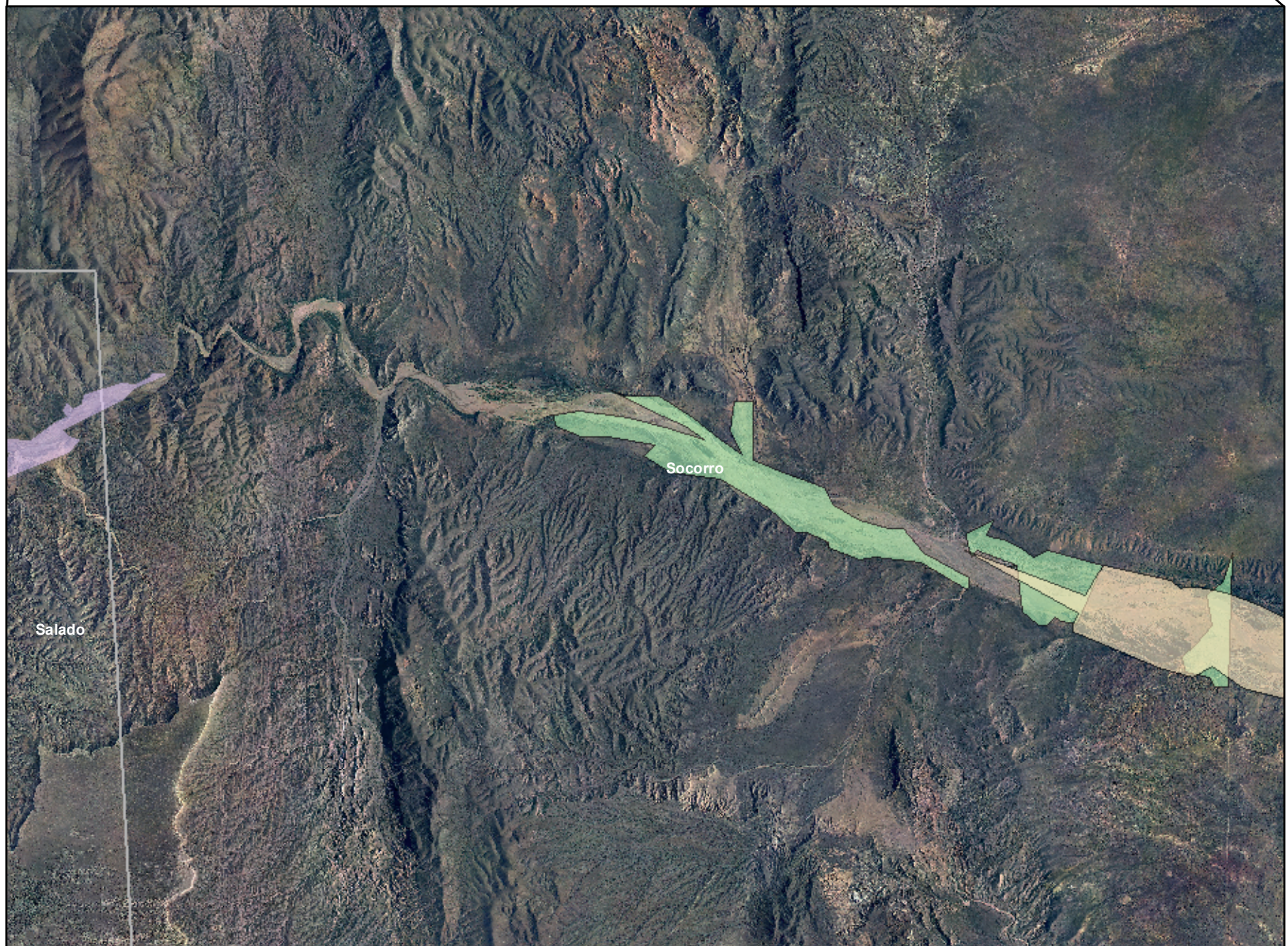
- Open Water
- Developed, Open Space
- Developed, Low Intensity
- Developed, Medium Intensity
- Developed, High Intensity
- Barren Land (Rock/Sand/Clay)
- Deciduous Forest
- Evergreen Forest
- Mixed Forest
- Shrub/Scrub
- Grassland/Herbaceous
- Cultivated Crops
- Woody Wetlands



- 2004 BLM Spray Coverage
- 2003 Sevilleta Spray Coverage
- 2004 Sevilleta Spray Coverage
- NM Soil & Water Conservation Districts

NOTE:
This large-scale view of the Rio Grande River Basin only reveals a small portion of the whole basin; it reveals part of the Sevilleta area.

SOURCE:
2004 BLM Spray Coverage --> "blm2004shp"
2003 Sevilleta Spray Coverage --> "sevilleta2003shp"
2004 Sevilleta Spray Coverage --> "sevilleta2004shp"



Coordinate System: UTM Zone 13N
Projection: Transverse Mercator
Datum: NAD 1983
Linear Unit: Meter
Created By: Zach Edwards, GIS Specialist